



PLAYERS INFORMATION - The Hague

Dear players,

We are pleased to welcome you in the Netherlands, in three beautiful venues.

This document "Players Information", will help you to have a good understanding of the services available to make your stay as convenient and comfortable as possible in the respective host city. We hope you enjoy your time in The Netherlands and wish you all the best for the upcoming competition.

The competition is played in three cities. **Arnhem, Apeldoorn and The Hague.**

The Preliminary Phase of the competition is divided in 2 hubs; one in the city of the Hague and one in the cities of Arnhem and Apeldoorn. All teams will play in the hub they are starting the pool phase up to the Quarter finals.

The semi Finals and Finals will be played in The Hague; qualified teams will be contacted by the Competition management to organise their transport and venue familiarization.

## IMPORTANT CONTACT DETAILS

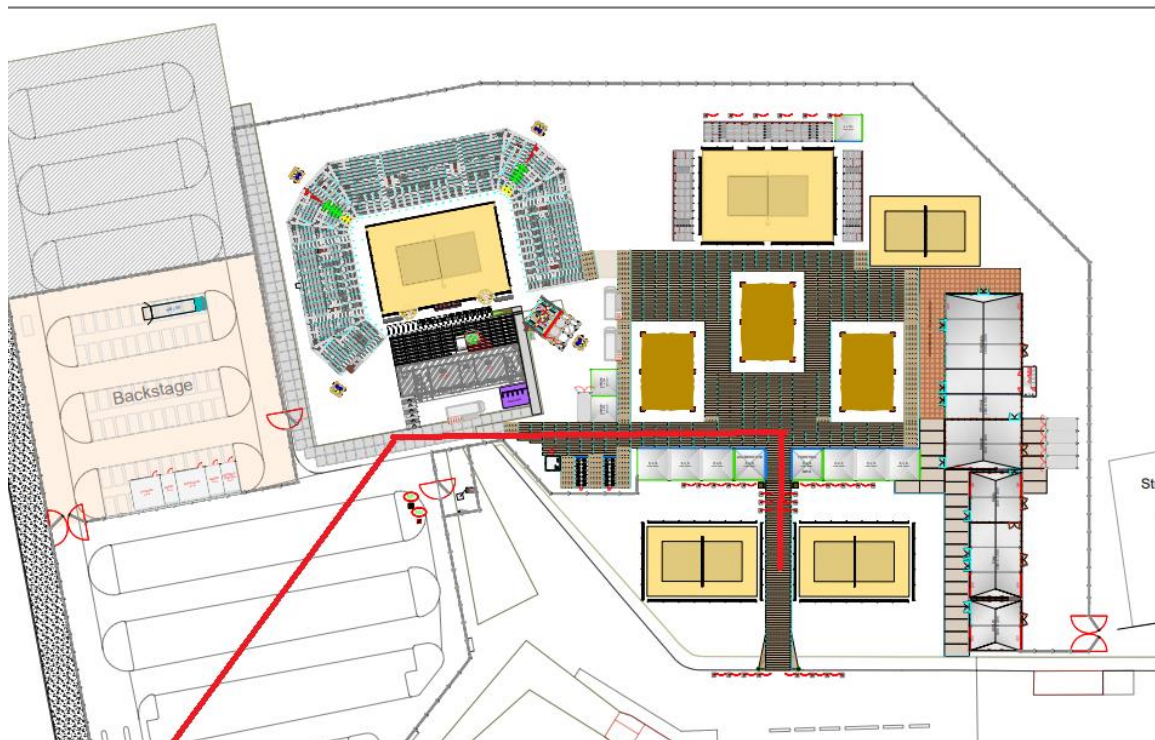
The below phone numbers will be available from August 10th:

Venue Manager	Lotte Mout	<a href="mailto:lotte@tigsports.nl">lotte@tigsports.nl</a>	+31627175368
Competition Director	Joep van Iersel	<a href="mailto:Joepvaniersel53@gmail.com">Joepvaniersel53@gmail.com</a>	+31 634833433
CEV Supervisor	Henrique Gomes	<a href="mailto:hgomes.fpv@gmail.com">hgomes.fpv@gmail.com</a>	+351 930589750
CEV Venue Coordinator	Elena Arsova	<a href="mailto:events@cev.eu">events@cev.eu</a>	
CEV Medical Delegate	Fernando Avila	<a href="mailto:feraviesp@gmail.com">feraviesp@gmail.com</a>	
Medical Helpline	Kalynda Romein		+31 613 098091
Transport	Hidde de Jong	<a href="mailto:hidde@tigsports.nl">hidde@tigsports.nl</a>	
Accreditation	Julia Heitmeijer	<a href="mailto:julia@tigsports.nl">julia@tigsports.nl</a>	

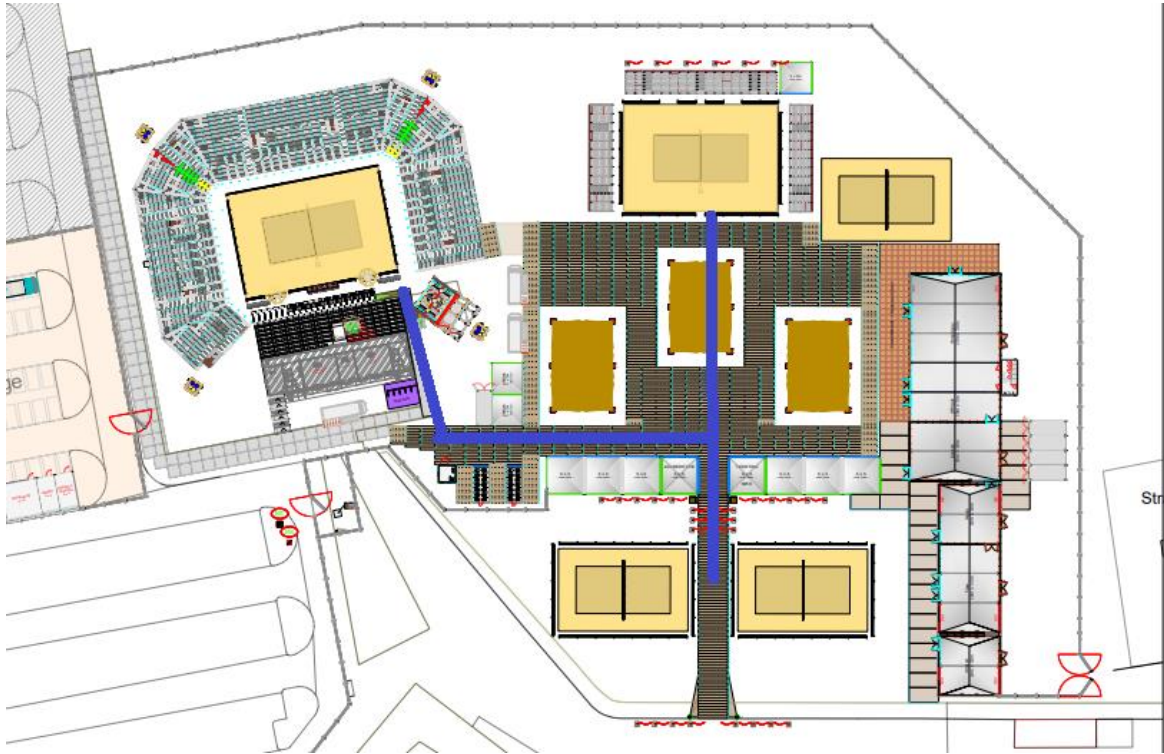
# Venue – The Hague ( 2 courts): Strandweg 4, The Hague



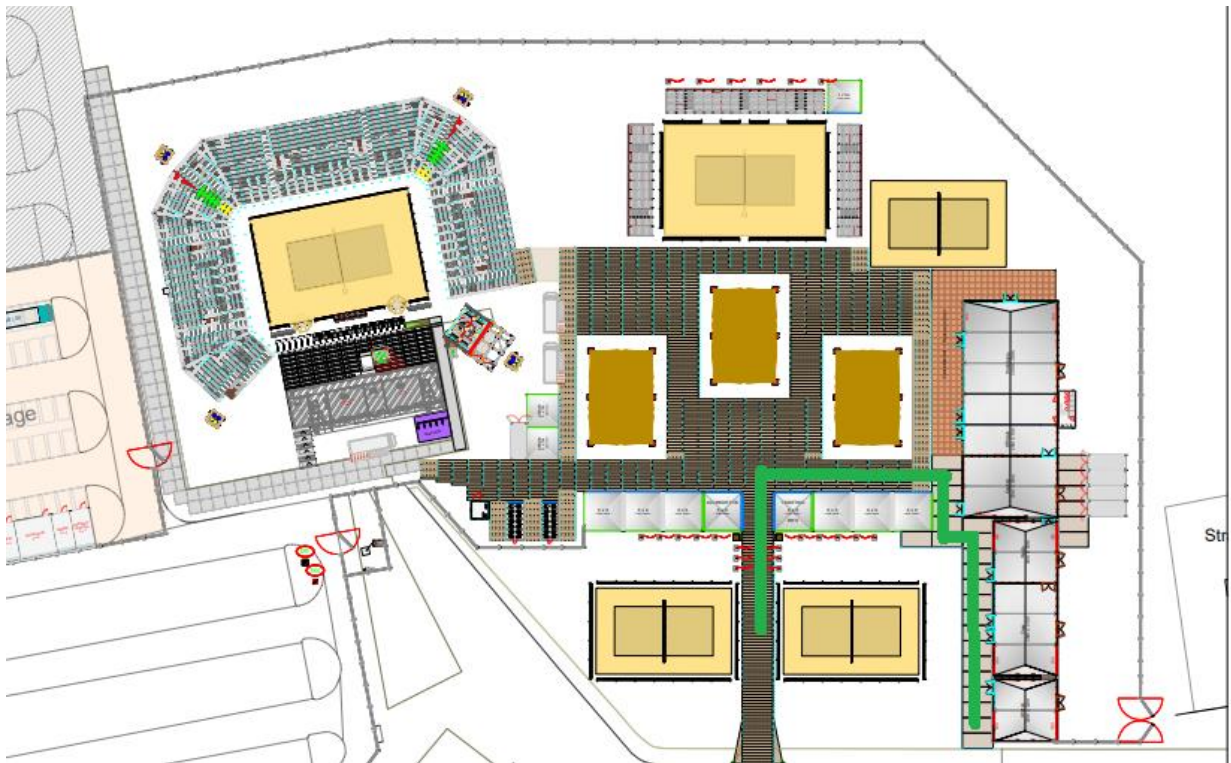
## Entrance for Players and Official Delegation members



Player's Route from Warm up court to central court and court 1



Player's Route from training courts to athletes lounge and catering areas



## ACCOMMODATION

The Hague Marina Beach: Strandweg 1 2586 JK Den Haag

All players will be provided with accommodation (twin rooms) from the official arrival dates (Monday 12/08 for women – Tuesday 13/08 for men) until the day after elimination (in case a competition Round is played over 2 days all eliminated teams are covered up to the end of the Round day).

*Every person is responsible for any and all additional services /extra expenses at the hotel such as mini-bar, phone calls, laundry and/or any damages.*

### **Important:**

- Main Draw Women players can check-in on Monday, 12<sup>st</sup> of August, at 14:00 at the earliest.
- Main Draw Men players can check-in on Tuesday, 13<sup>th</sup> of August, at 14:00 . at the earliest.
- Check-out time is 12:00 (noon) at the latest!

Hotel rooms for official delegation members are not included and should be booked according to the provisions of the events Practical Info.

Please make sure you are as sand free as possible before entering the hotel.

If you put out the "do not disturb" sign, please note that your room will not be cleaned.

## PRELIMINARY INQUIRIES

Preliminary Inquiries for Women: Monday 12<sup>th</sup> of August 18:00-19:00 at the Competition Management Office

Preliminary Inquiries for Men: Tuesday , 13<sup>th</sup> of August 16:00 – 17:00 at the Competition Management Office

All athletes need to bring their bikini bottoms / shorts for an eventual photo shooting. **Please note:** You have to attend the Preliminary Inquiry to sign in for the tournament!

Players will get bottles for refilling your water. If you use your own bottles, please cover any logos or advertising on it.

## ACCREDITATION

Players and Official delegation members can pick up their accreditation during the Preliminary Inquiry.

As per the CEV Official Communications [cev-eurobeachvolley-2024-official-communications.pdf](#) and the event Practical Info [cev-eurobeachvolley-2024-practical-info-updated-on-10072024.pdf](#), all participating teams, as well as up to two duly accredited team members per team (coaches, physiotherapist, etc.),

will be provided with official accreditation cards. This ensures access to the designated venue areas.

Any last minute accreditation requests, should be addressed to the [beach@cev.eu](mailto:beach@cev.eu) mail account and are subject to confirmation.

Please note that requests for all delegation members need to be supported with the photo of the applicant and relative accreditation documents.

Please ensure that your accreditation is always with you and visible to ensure access to designated areas and to prevent misunderstandings.

If you have any further questions, please do not hesitate to contact Accreditation Manager Julia Heitmeijer at [julia@tigsports.nl](mailto:julia@tigsports.nl).

## FITNESS CENTRE

A workout room is available in the Hague Marina Beach hotel

## MEALS

### Breakfast:

At the official Players hotel, daily from 06:30 to 10:30

### Lunch:

At the Venue from 1200–14:30

### Dinner:

At the Venue, from 18:30–21:00

in case of matches happening during the allocated time slot, lunch boxes can be prepared if ordered in advance in the catering area, to request so pls address to the Competition Management Office the evening before.

Lunch and dinner is provided to all players through meal vouchers that will be handed out during the Preliminary Inquiry for the Pool Phase and through the Competition Management Office for the Single Elimination phase. No meals will be served without these vouchers.



## TRAINING SESSIONS

Training will start on Sunday August 10<sup>th</sup> from 10:00 to 21:00. You can book your first training here below. You can book every other session one day earlier. Slots are 30 minutes per team.

The Booking site is: <https://vw.beachcourts.net/reservierung>

Please ensure that there is no conflict with your Preliminary Inquiry (be aware of transportation times, etc.).

## TRANSPORTATION

### - Arrival

Teams arriving at Amsterdam Schiphol Airport that have provided their BV-04 form before August 1<sup>st</sup> as per the provisions of the Practical Info and arrive on the official arrival days, will receive a shuttle transfer from Schiphol Airport to the hotel.

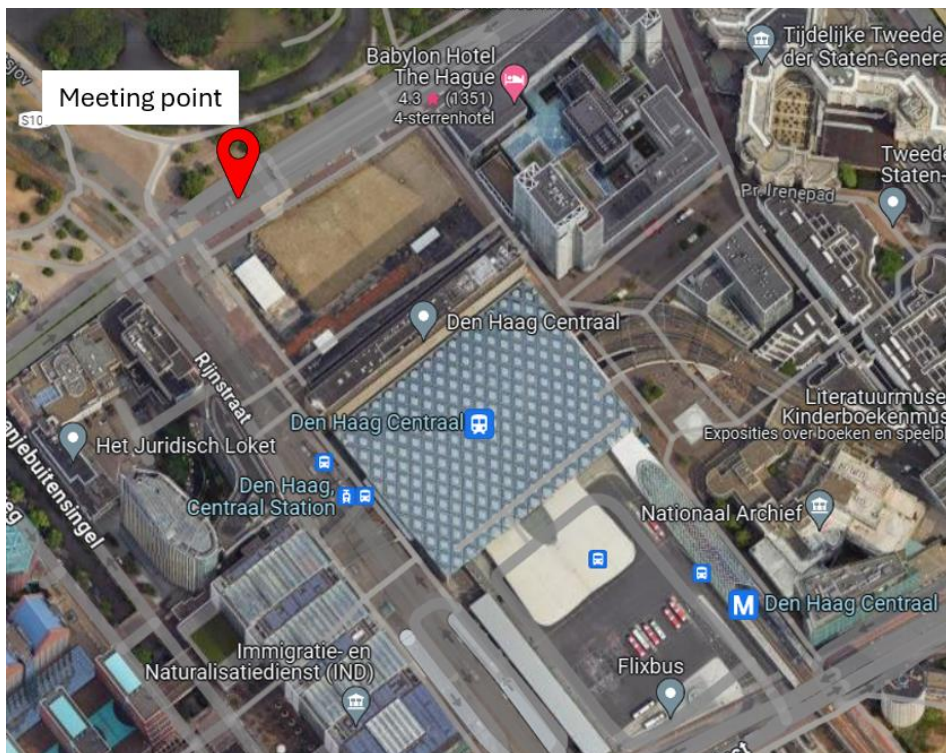
Teams arriving at Amsterdam Schiphol Airport that have not provided their BV-04 form before August 1<sup>st</sup> will be provided with a train ticket to travel to the respective host city. For Sunday, August 11th, and Monday, August 12th, these train tickets can be collected at Starbucks (Aankomstpassage, 1118 CP Schiphol) at the airport by the LOC representative (bearing a sign and an orange sweater). This Starbucks is just a few meters away from the Schiphol Airport train station.

From Schiphol Airport train station you will take the train to the train station of the respective host city. Upon arrival, a shuttle will be waiting to take you to the local train station. The train stations are as follows:

- Arnhem Central Station
- Apeldoorn
- The Hague Central Station (Den Haag Centraal)

Outside each station, there is a 'meeting point' (see the addresses and images below) where you can be picked up by a driver and taken to the hotel as long as you call +31 6 37 29 79 89 half an hour in advance to arrange this.

- Meeting point The Hague Central: Bezuidenhoutseweg, 2595 AA The Hague
  1. After getting off the train, go through the gates and check out;
  2. Follow the signs towards the 'Centrum' & 'Rijnstraat' exits;
  3. Once outside, immediately turn right and walk towards Bezuidenhoutseweg.



- Hotel to Venue

The Hotel is walking distance to the venue

- Departure

For your departure shuttle to the airport please contact the Competition Management office, the day before your departure and declare the departure time from the hotel, your flight number and your destination.

## PLAYERS UNIFORMS

Each player will receive:

- 2 sets of Uniforms for the 3 pool play matches
- 1 new shirt for the matches of round 24 and round of 16
- 1 new shirt every match from Quarter Finals onwards

Players will get the set of (tank-) tops for the first 2 games at the competition court from the referees.

Players will be informed by the Competition Management Office on which of the 2 already received pairs will be used for the 3<sup>rd</sup> pool match.

Please keep the (tank)tops through the tournament. We aim at giving the right sizes to everyone, but this will not be guaranteed.

## VIDEO SHARING

Videos of the matches will be available to download on the CEV Cloud:

[https://cloud.cev.eu/url/video\\_sharing\\_EBVC\\_2024](https://cloud.cev.eu/url/video_sharing_EBVC_2024)



This link takes you to a folder that has the 3 cities plus the competition days in each of them with the respective matches.

## MEDICAL ASSISTANCE

Medical assistance will be available from Tuesday 13<sup>th</sup> of August, until Sunday 18<sup>th</sup> of August. It will be located at the Physio area.

Treatments will be available 30 minutes before the start of the first match until 30 minutes after the end of the last match.

One physiotherapist will be available to assist during the official training sessions, from Monday 12/08 onwards.

## FAMILY & FRIENDS TICKETS

Each team playing in the CC of each city is eligible for up to four Family & Friends Tickets per match.

To get these Tickets please fill out the form here [CEV EuroBeachVolley 2024 Friends & Family of the players \(smartsheet.com\)](#).